

J:\5700\5772\LANDS\Plans\5772-L-29 Landscape Context Plan REV M.indd

Roxhill Developments Ltd.  
Northampton Gateway SRFI

## ILLUSTRATIVE LANDSCAPE PLAN - CONTEXT

1:10,000@A1  
25 April 2018 OFD  
5772-L-29 REV M



masterplanning  
environmental assessment  
landscape design  
urban design  
ecology  
architecture  
arboriculture

FPCR Environment and Design Ltd  
Lockington Hall  
Lockington  
Derby DE74 2RH  
t: 01509 672772  
f: 01509 674565  
e: mail@fpcr.co.uk  
w: www.fpcr.co.uk





J:\5700\5772\LANDS\Plans\5772-L-30 Landscape Plan REV M.indd

Roxhill Developments Ltd.  
Northampton Gateway SRFI

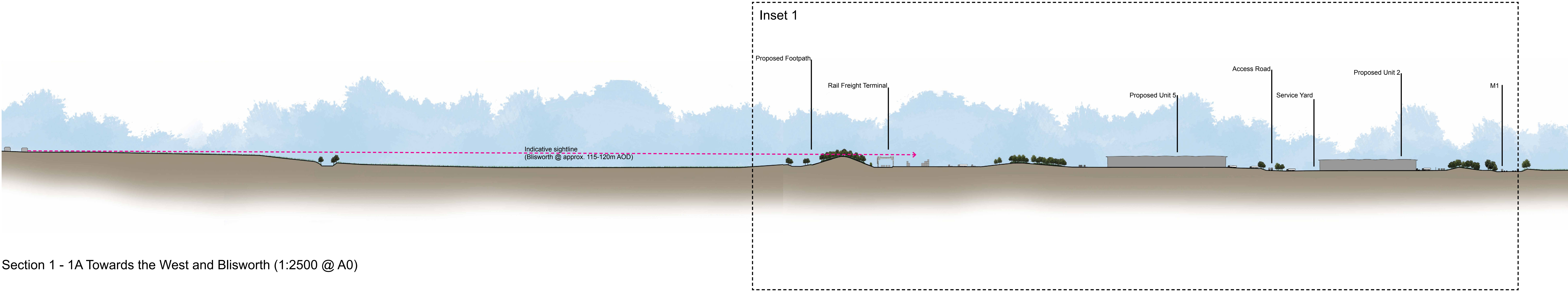
## ILLUSTRATIVE LANDSCAPE PLAN - MAIN SITE

1:5,000@A1  
25 April 2018 OFD/TRJ  
**5772-L-30** REV M

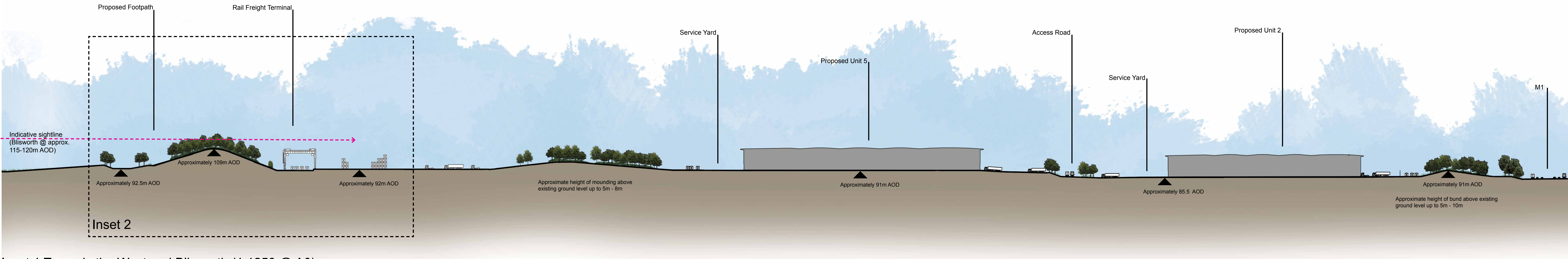
fpcr

masterplanning  
environmental assessment  
landscape design  
urban design  
ecology  
architecture  
arboriculture  
FPCR Environment and Design Ltd  
Lockington Hall  
Lockington  
Derby DE74 2RH  
t: 01509 672772  
f: 01509 674965  
e: mail@fpcr.co.uk  
w: www.fpcr.co.uk





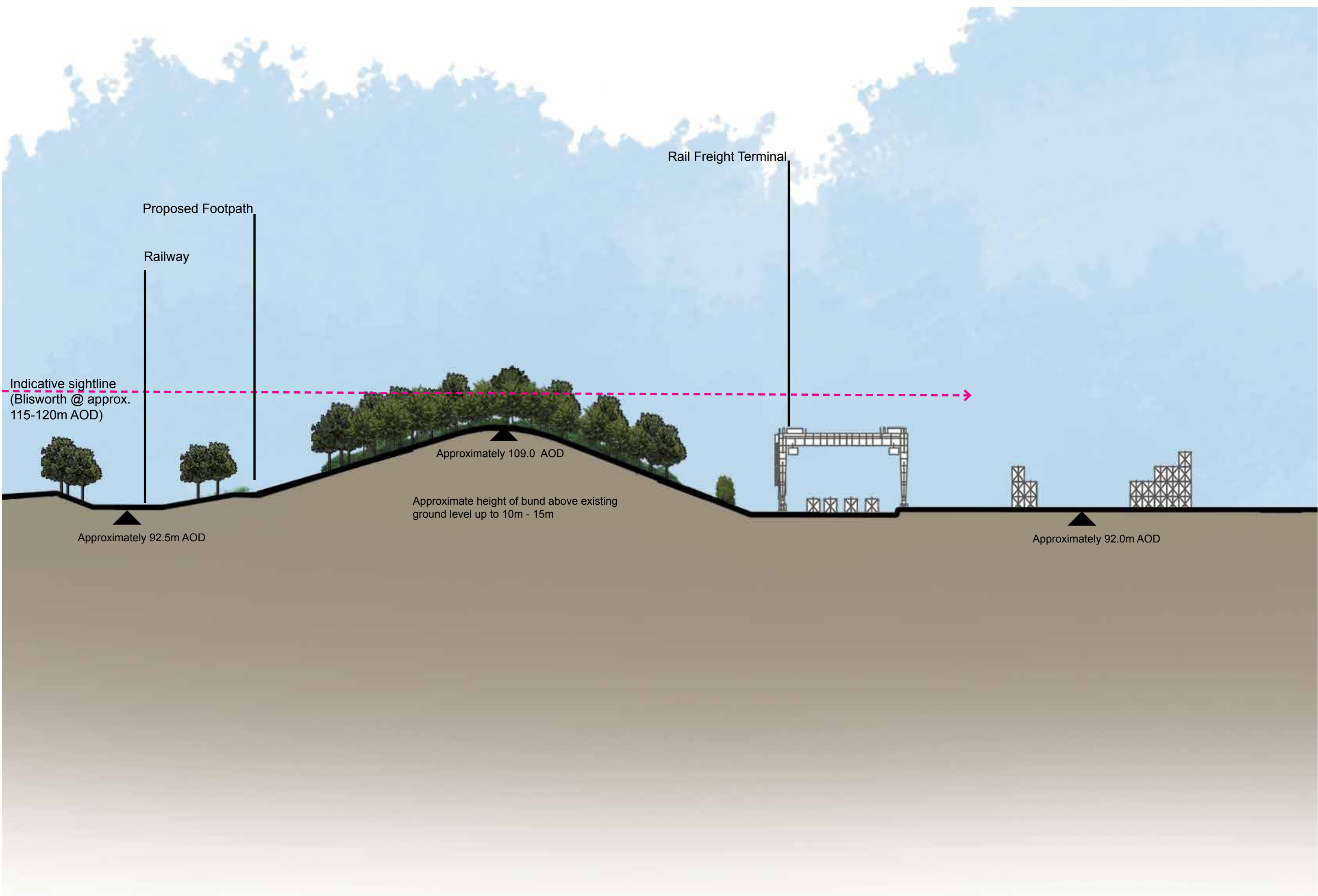
Section 1 - 1A Towards the West and Blisworth (1:2500 @ A0)



Inset 1 Towards the West and Blisworth (1:1250 @ A0)



Section Location Plan

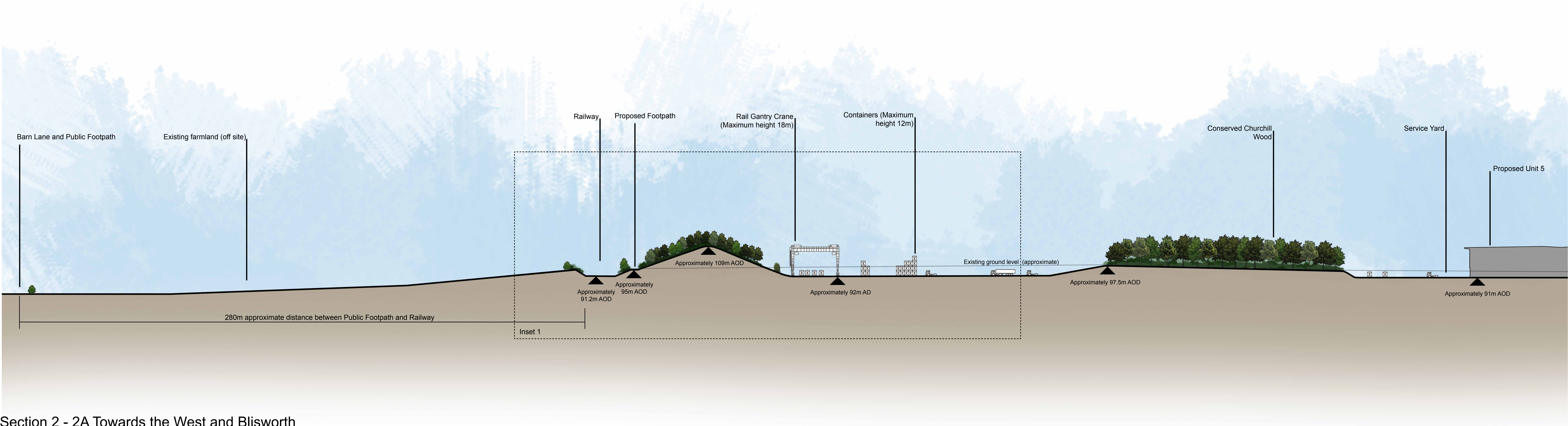


Inset 2 Towards the West and Blisworth (Not to Scale)

This drawing is the property of FPCR Environment and Design Ltd and is issued on the condition it is not reproduced, retained or disclosed to any unauthorised person, either wholly or in part without written consent of FPCR Environment and Design Ltd.

Note: Levels are approximate based upon available topographic survey and OS data and draft earthworks strategy

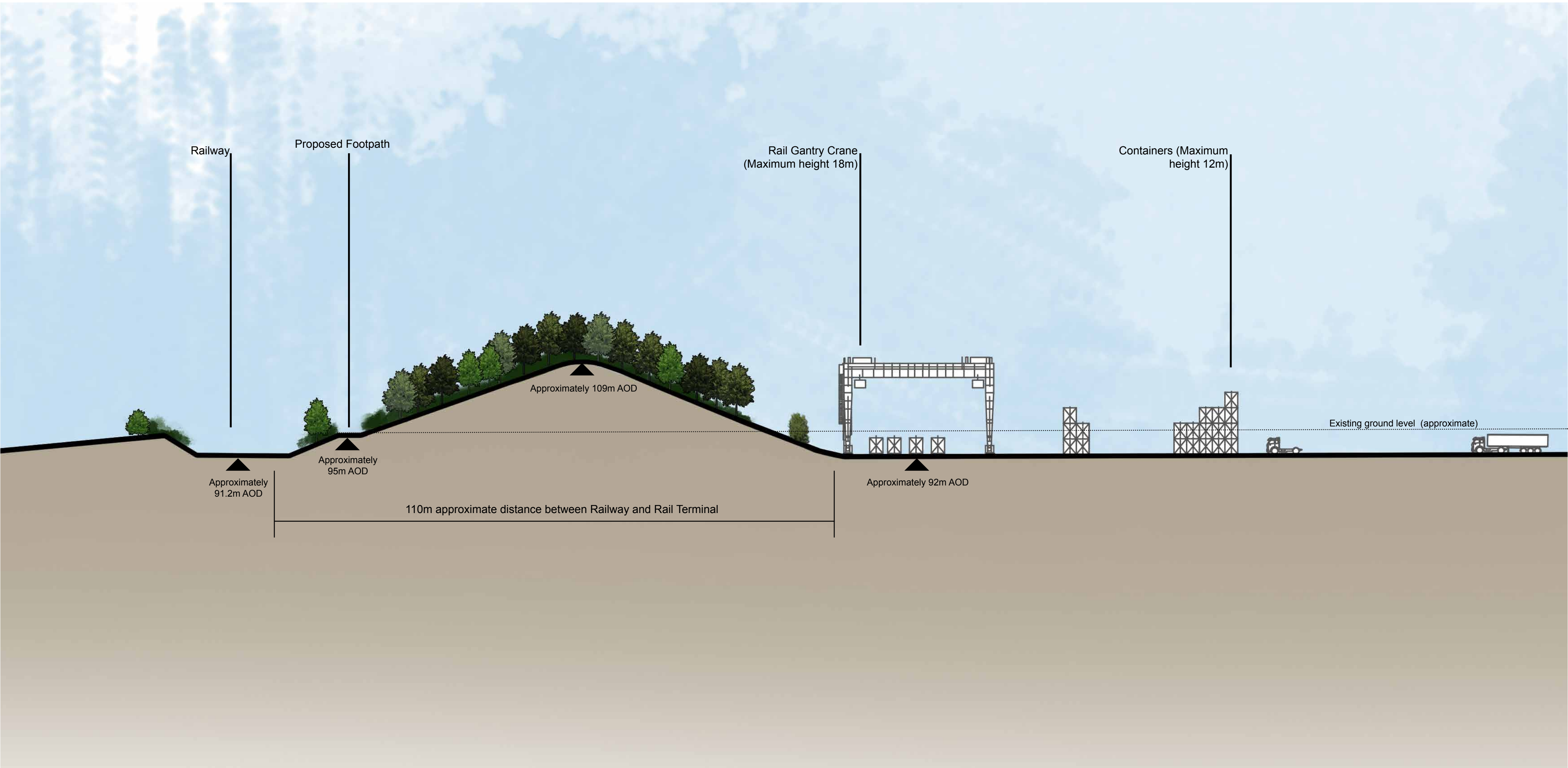




Section 2 - 2A Towards the West and Blisworth



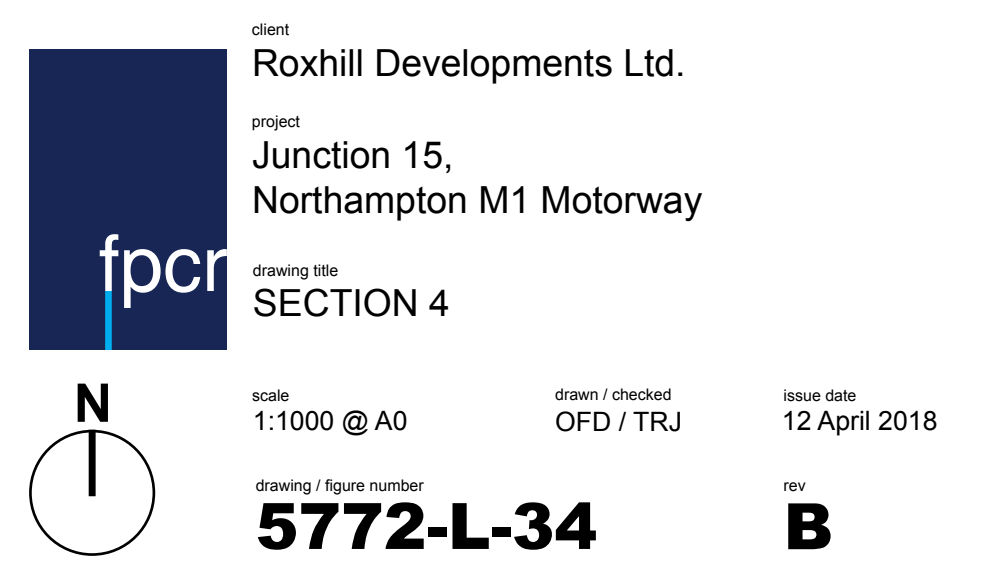
Section Location Plan



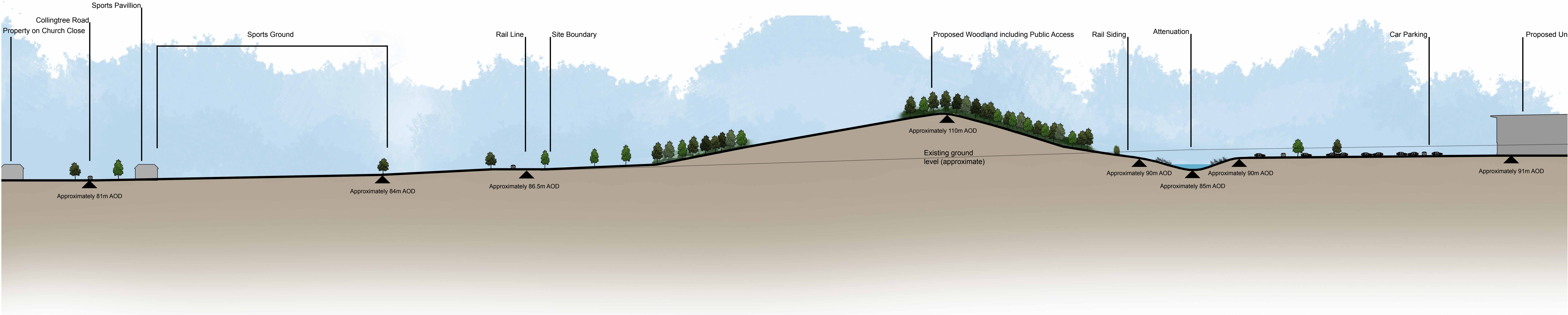
Inset 1: Towards the West and Blisworth (Not to Scale)



Note: Levels are approximate based upon available topographic survey and OS data and draft earthworks strategy





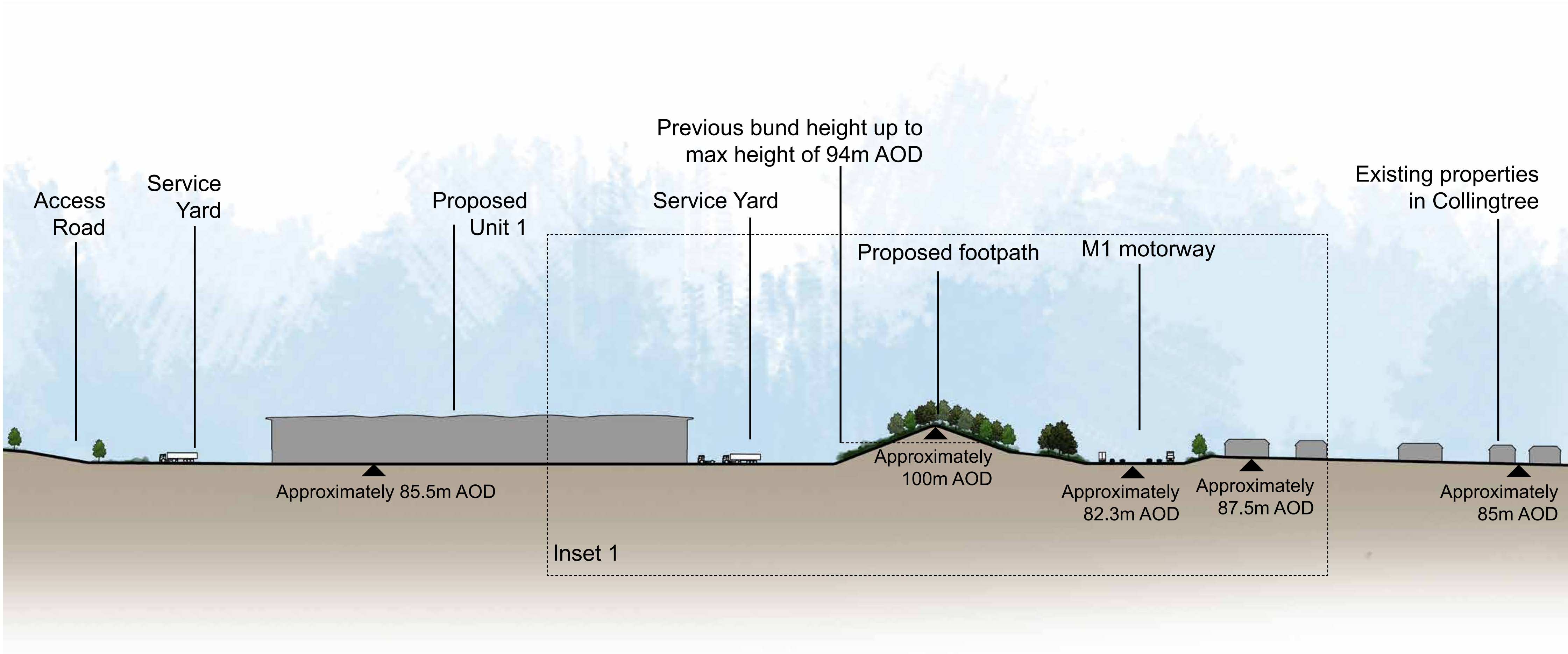


Section 3 - 3A Milton Malsor (South East Edge)



Section Location Plan

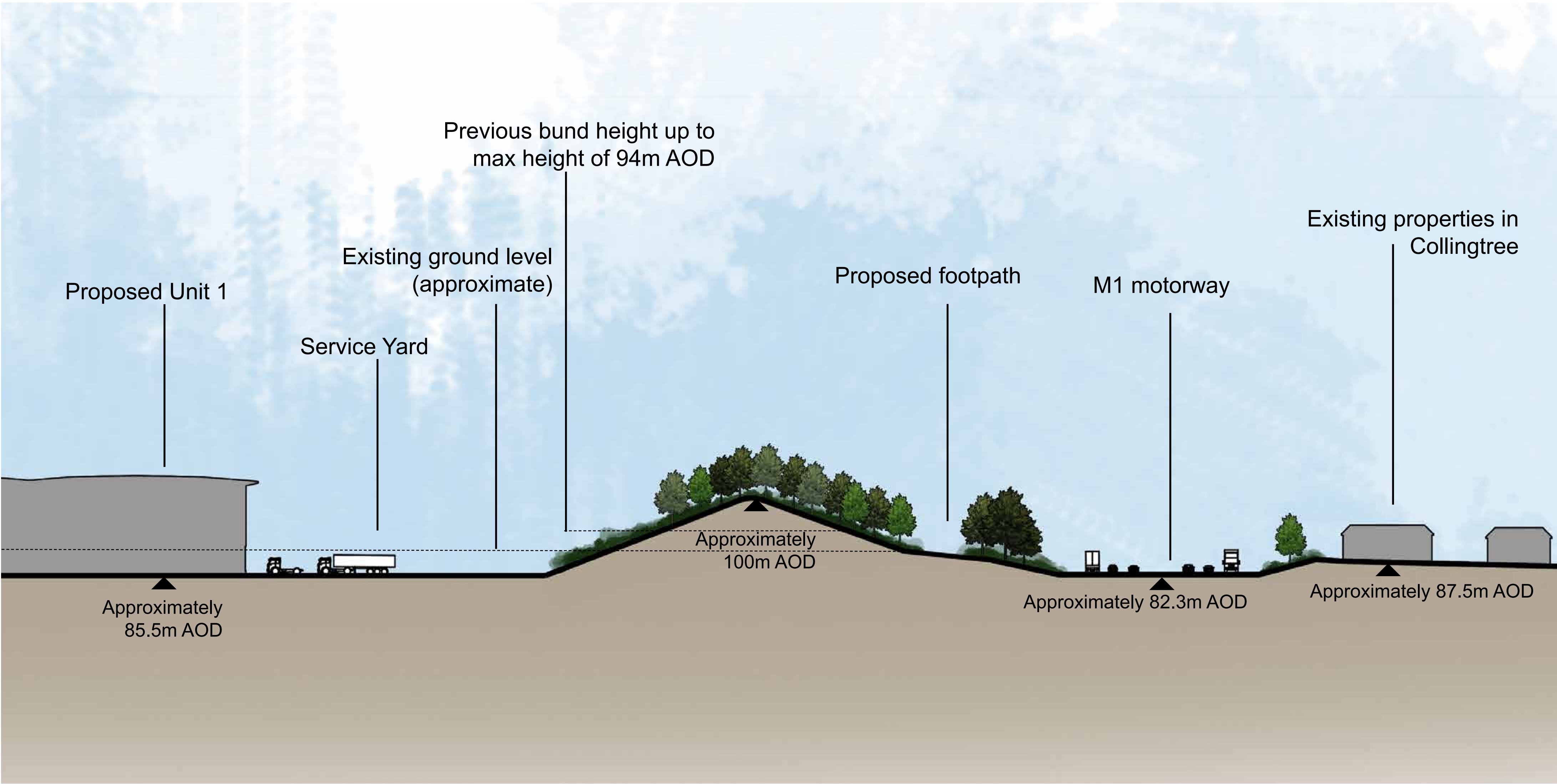




Section 5 - 5A Towards the East and Collingtree (1:1000 @ A0)

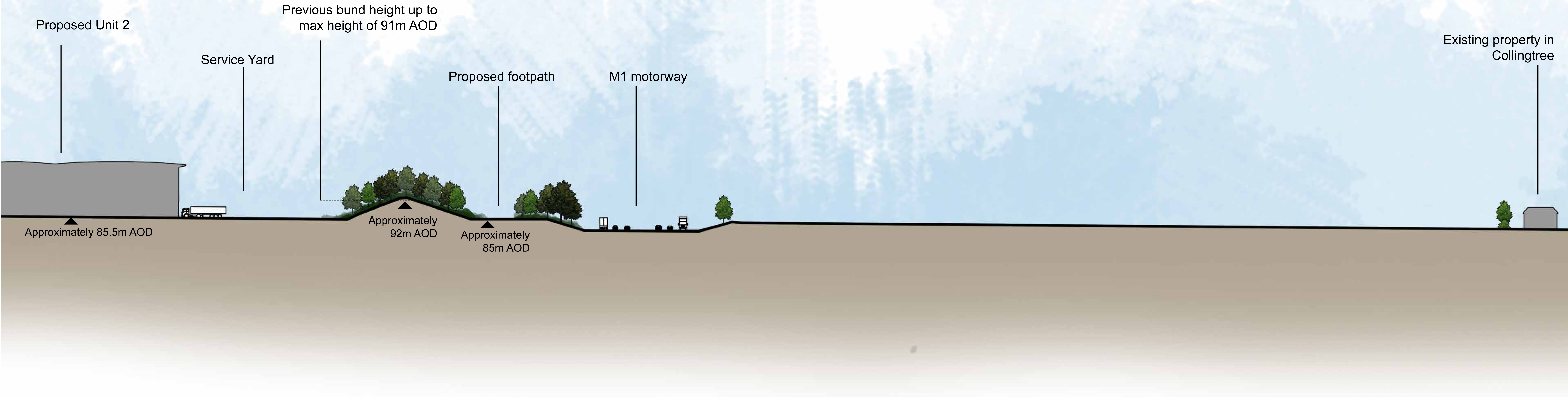


Section Location Plan



Inset Towards the East and Collingtree (1:500 @ A0)





Section 6 - 6A Towards the East and Collingtree (1:500 @ A0)



Section Location Plan





J:\5700\5772\LANDS\Plans\5772-L-38 Landscape Plan - Roade Bypass REV P.indd

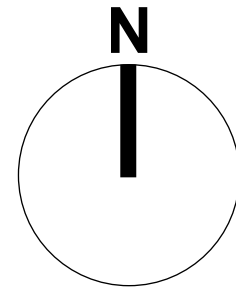
Roxhill Developments Ltd  
Northampton Gateway SRFI

ILLUSTRATIVE LANDSCAPE PLAN - ROADE BYPASS

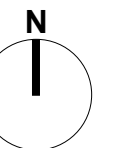
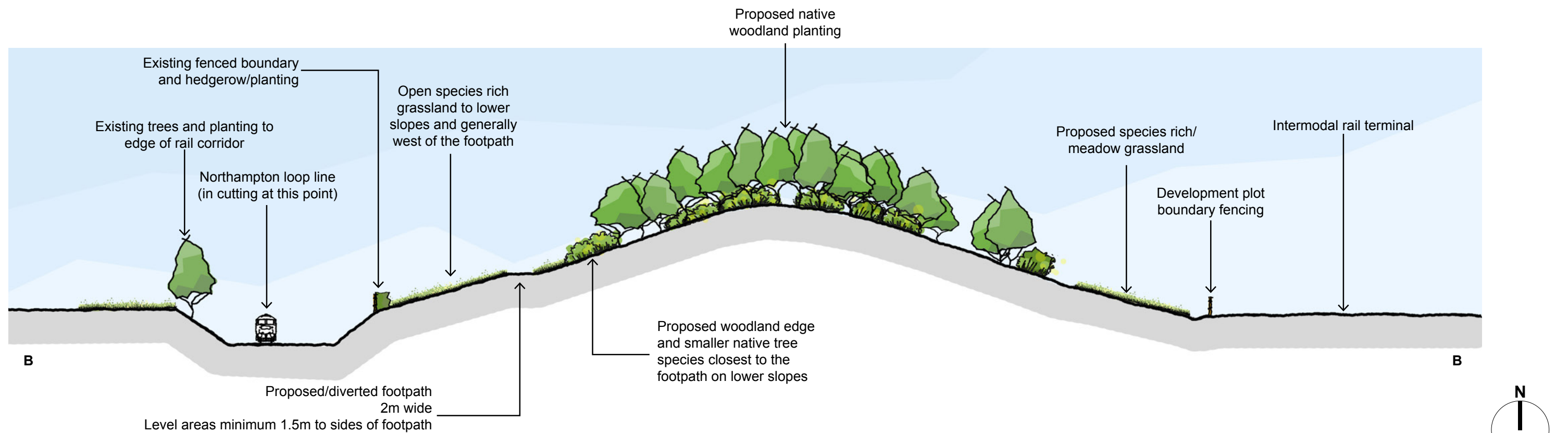
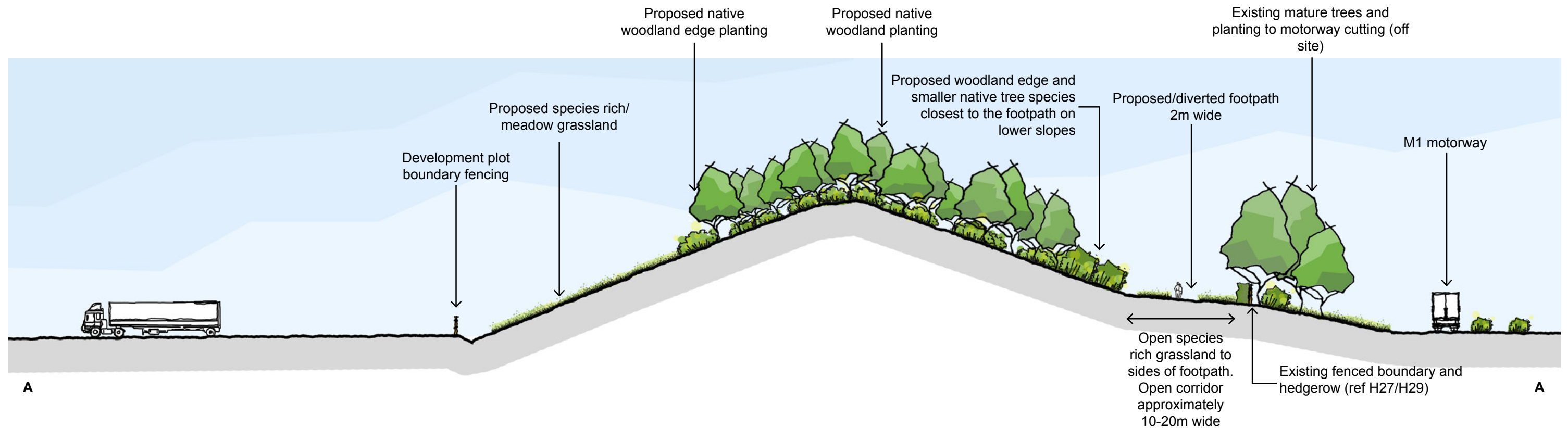
1:5,000@ A1  
25 April 2018 OFD/TRJ  
5772-L-38 rev P

masterplanning  
environmental assessment  
landscape design  
urban design  
ecology  
architecture  
arboriculture  
FPCR Environment and Design Ltd  
Lockington Hall  
Lockington  
Derby DE74 2RH  
t: 01509 672772  
f: 01509 674565  
e: mail@fpcr.co.uk  
w: www.fpcr.co.uk

fpcr

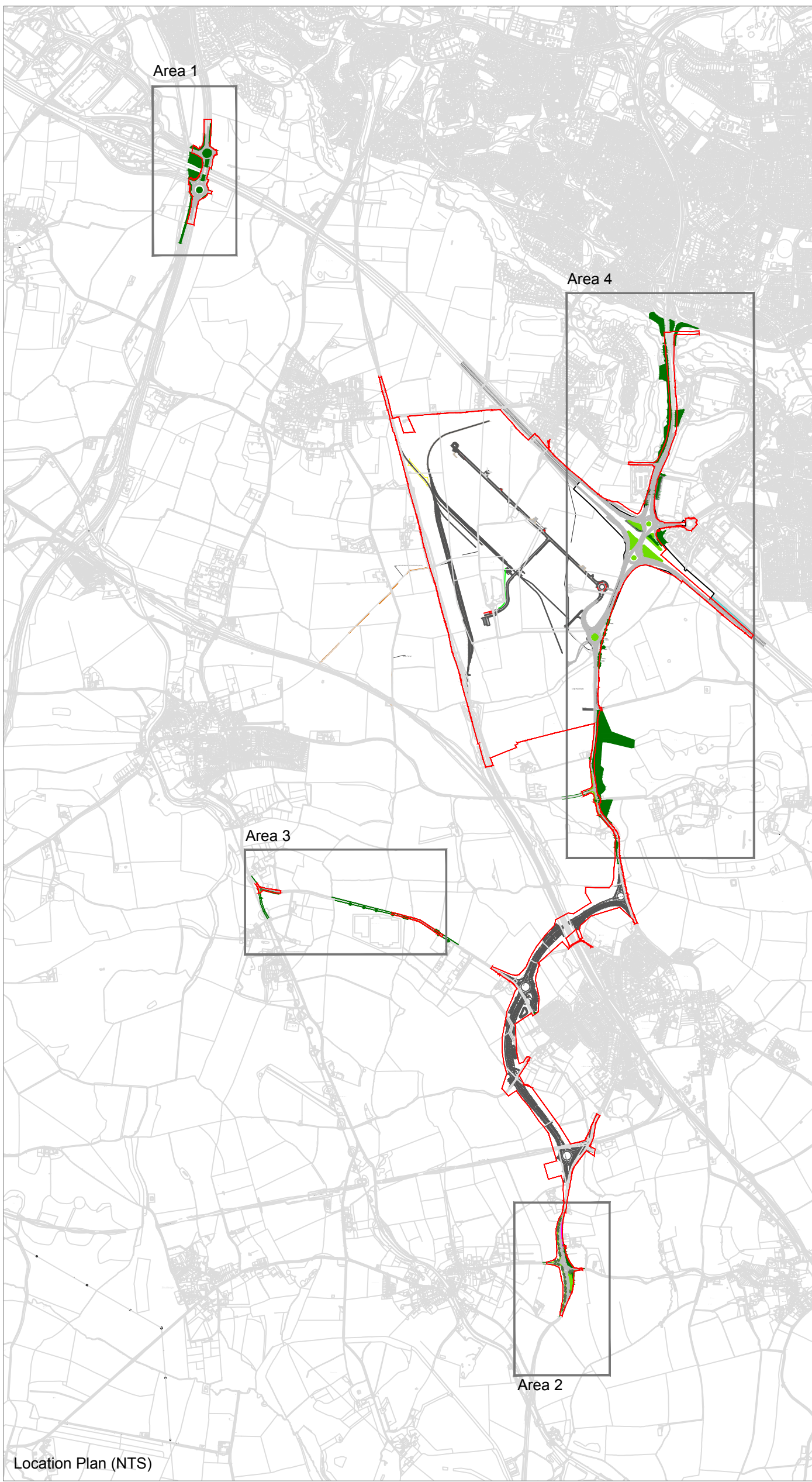
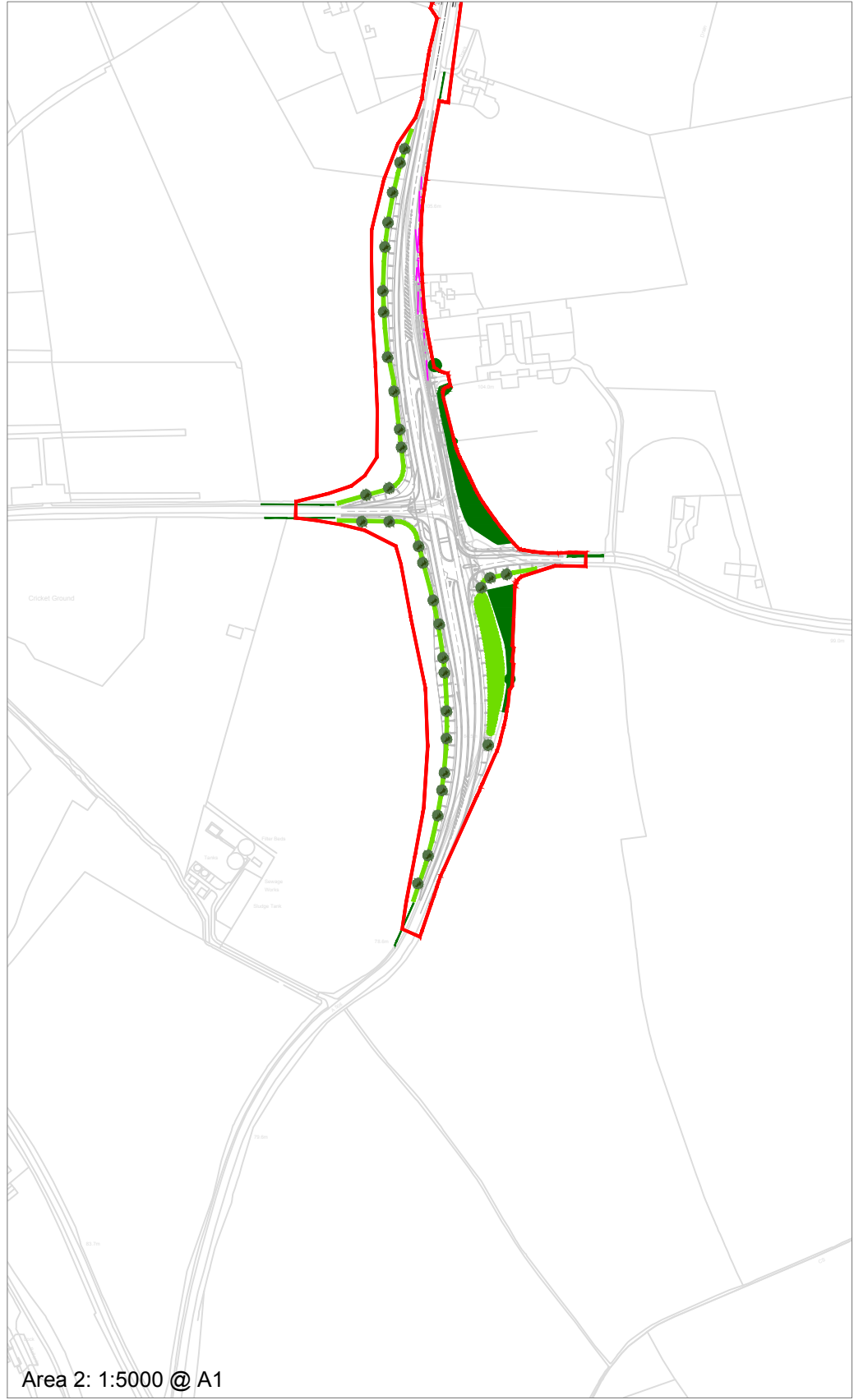
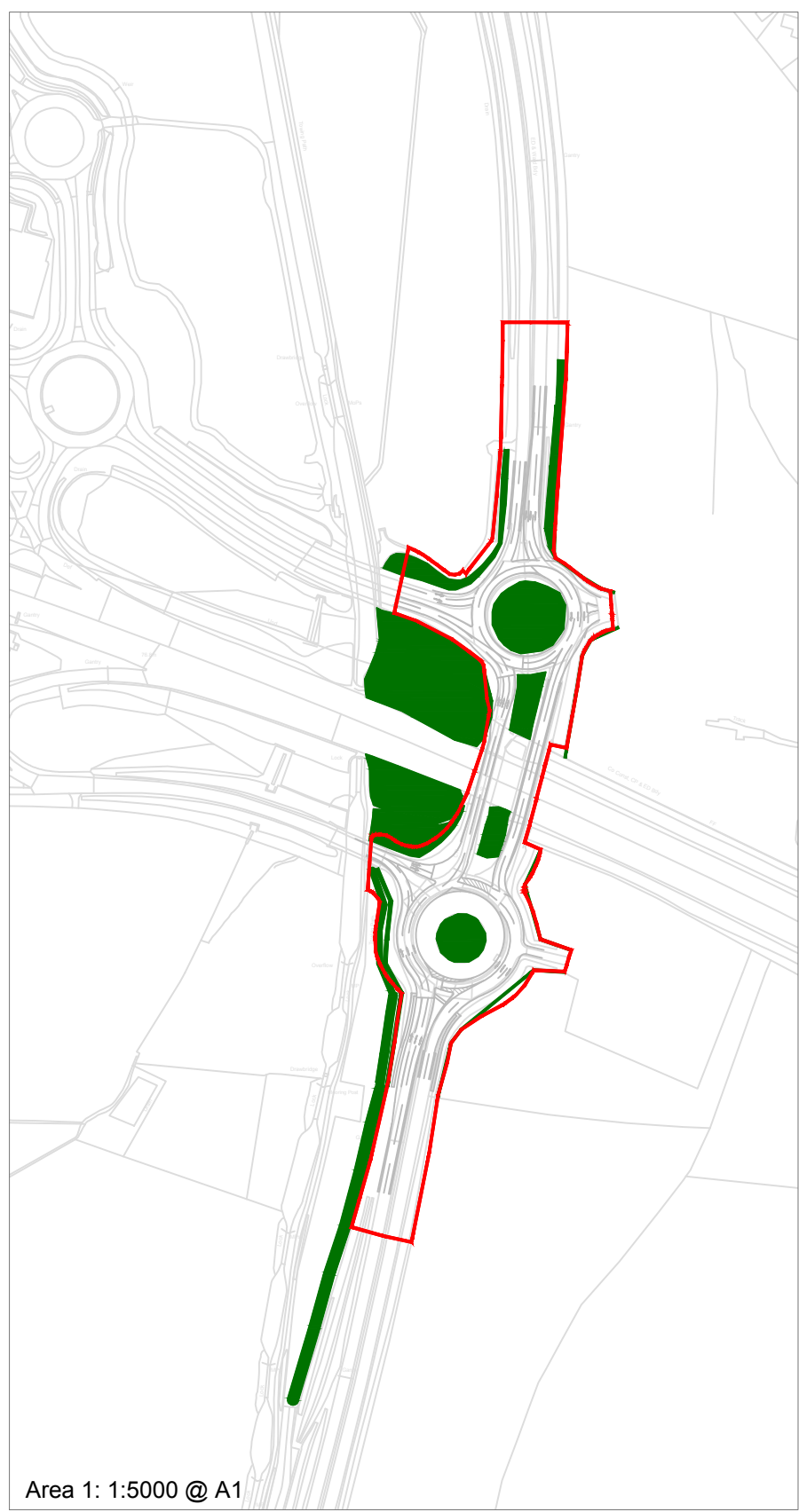






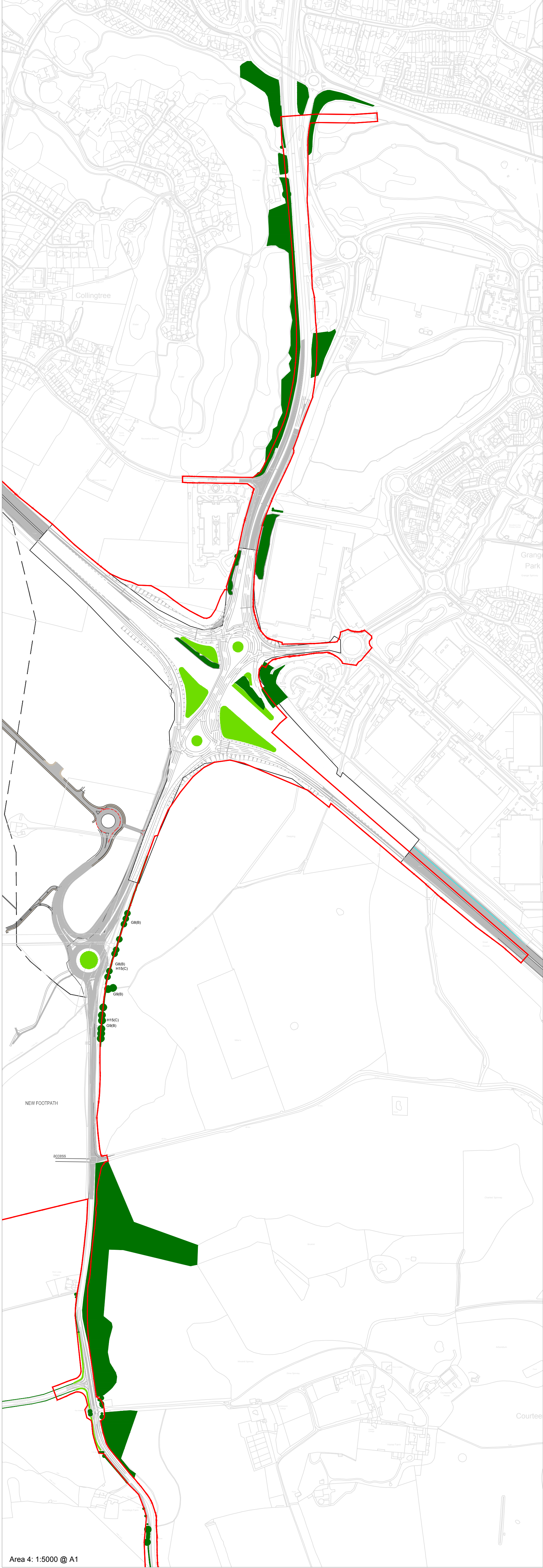
J:\5700\5772\LANDS\Plans\sections\5772-L-41A Illustrative Landscape Sections - Main Site Perimeter.indd





- Key**
- Site/DCO Boundary
  - Existing Woodland
  - Existing Hedgerows/Trees
  - Proposed Woodland
  - Proposed Trees
  - Proposed Hedgerows

**Note:**  
For further information on tree retention and/or removal refer to the Arboricultural Assessment and Tree Retention Plans ref: 5772-T-10 - 572-T-19.



Roxhill Developments Ltd.  
M1 Junction 15 West  
Northampton

# ILLUSTRATIVE LANDSCAPE SCHEME FOR HIGHWAYS WORKS

1:5,000 @ A1  
3 May 2018 OFD / TRJ  
**5772-L-42** rev **A**

masterplanning  
environmental assessment  
landscape design  
urban design  
ecology  
architecture  
arboriculture

FPCR Environment and Design Ltd  
Lockington Hall  
Lockington  
Derby DE74 2RH  
t: 01509 672772  
f: 01509 474565  
e: mail@fpcr.co.uk  
w: www.fpcr.co.uk